

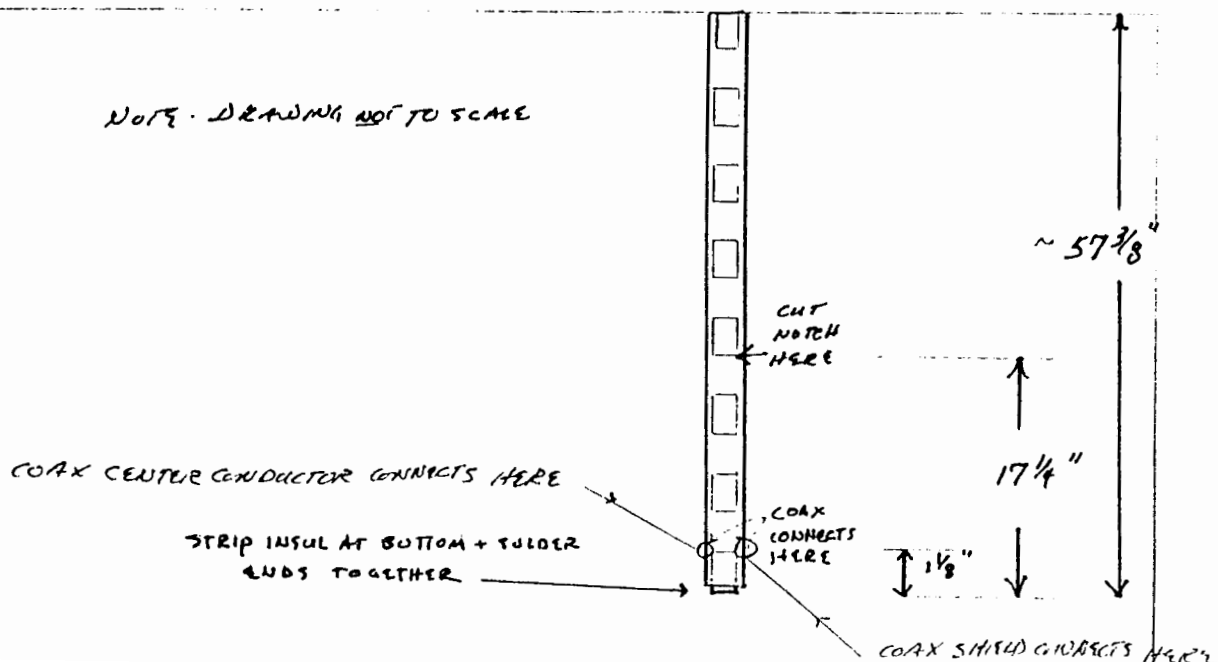
## Simple Twin-Lead J-Pole for Two Meters (design adapted from QST, July 1995, pp 62-64)

Materials: 1 piece, twinlead about 60" long  
1 piece, 50 ohm coax (RG-58, RG 174, etc.)  
Coax connector (BNC, RCA phono, PL-259, etc.)

Tools: Wire cutters, X-acto knife, Soldering iron, Elec Tape

### Instructions: (refer to the drawing)

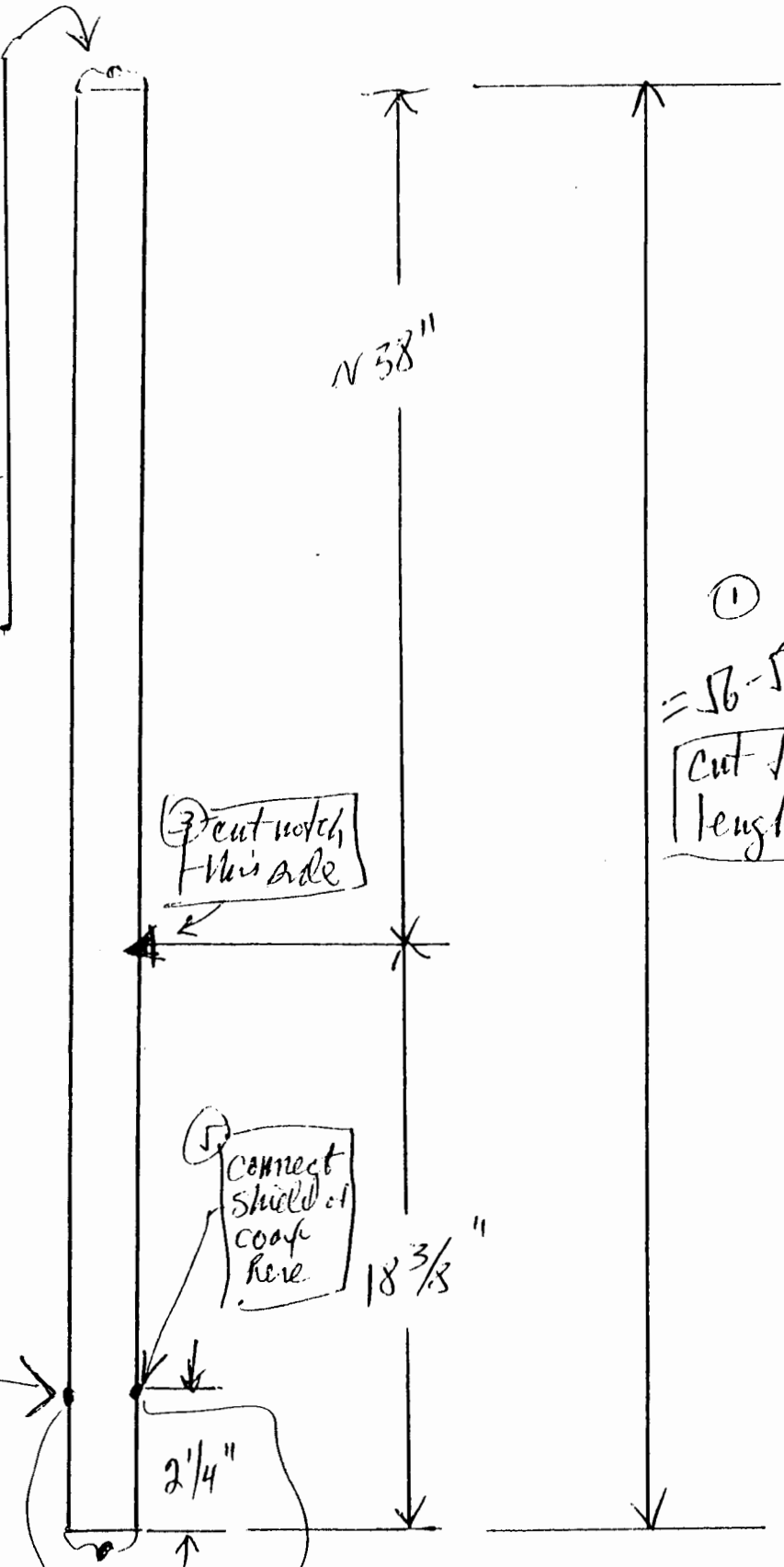
1. Strip insulation back about 3/4" at one end of the twinlead, bend the conductors together as shown and solder.
2. Cut a notch in one side of the twin lead 17-1/4" up from the soldered ends at the bottom.
3. Strip enough insulation away from each of the conductors to allow connection of the Coax feedline about 1-1/8" up from the soldered ends at the bottom.
4. Solder the Coax feedline at the points shown (1-1/8" from bottom).  
*NOTICE THAT THE SHIELD CONNECTS TO THE NOTCHED SIDE.*
5. Solder your coax connector to the other end of the Coax
6. Trim the twinlead to final length by cutting off top as needed.



# TV TWIN LEAD J-POLE

⑥

Cut top; temporarily connect both wires; cover w/ tape; check for SWR; turn down; satisfied w/ SWR; solder wires; weather proof; done. The overall length will vary but be about 56" +/- inches, top to bottom



③ Cut notch this side

⑤ connect shield of coax here

④ connect center coax here

⑦ solder bottom together

① = 56-58"  
Cut total length

Copy to eng / enc 50239 / etc